



The Purest Key to Success: Bosch Activated Carbon Cabin Filters



BOSCH

Invented for life

Protect Your Car Against Pollen, Dust and Pollutants



A vehicle collects pollutants while you drive, in much the same way as a vacuum cleaner. Studies have shown that the amount of pollution inside a vehicle is up to six times higher than that at the roadside. Bosch activated carbon cabin filters offer drivers and passengers all-round protection, cleaning the air of harmful gases before they can enter the interior of the vehicle.

Improved comfort and health for just two cents more per day

High-performance cabin filters provide protection against pollen and dust. Clean air can only be guaranteed if you change your cabin filter regularly, and changing your standard filter to a Bosch activated carbon cabin filter is most certainly worth it. Alongside low additional costs, the filter also boasts considerable advantages when it comes to comfort, safety and health.

Important: Cabin filters should be changed every 15 000 km or after one year at the very latest.

Clean, safe and concentrated

- ▶ Health protection through reliable filtration of soot, pollen, dirt particles and pollutants: particularly important protection for anyone with allergies or asthma
- ▶ Activated carbon cabin filters provide extra protection by absorbing gases that are odorous and harmful to health, e.g. ozone and nitrogen oxide
- ▶ Improved concentration due to high air quality inside the vehicle
- ▶ Increased safety through reduced deposits, e.g. in the fan or on the windscreen, and protected air conditioning performance



Irritating and dangerous:

Allergies are affecting more and more people, particularly children. The Bosch pollen calendar displays the peak pollen times when allergy sufferers are worst affected and also tells you which pollen types are on the move when.

Unbelievable Technology with Impressive Results: Bosch Activated Carbon Cabin Filters

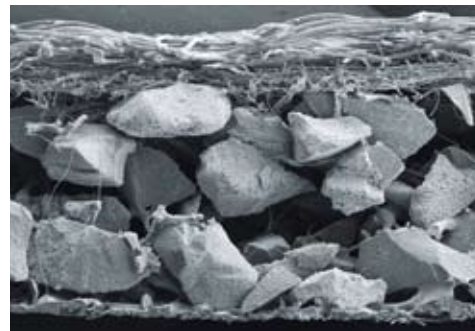


Just looking from the outside you can't really tell – but every single activated carbon cabin filter from Bosch is a small technological masterpiece with a completely natural activated carbon layer made from coconut shells. The shells undergo carbonization in a hermetically sealed environment and are then crushed. They form their porous structure in high-temperature steam (up to 800°C) and become activated carbon.

Large surfaces versus the smallest pollutant particles

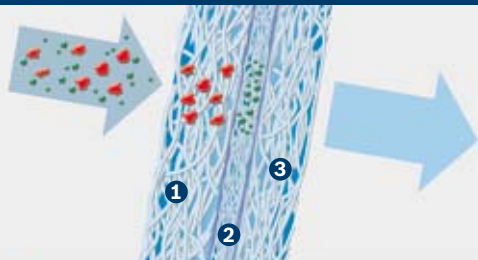
Bosch activated carbon cabin filters have some impressive statistics:

- ▶ 1 gram of activated carbon has an interior surface of approx. 1000 m²
- ▶ 1 teaspoon of activated carbon equates to the surface area of a football pitch
- ▶ The smallest particle retained is around 500 times smaller than the diameter of a human hair
- ▶ Bosch activated carbon cabin filters function reliably from -40 to +85°C
- ▶ Respirable particles with a diameter of less than 0.0025 mm are filtered out by various filter mechanisms, such as electrostatic charging, for example



The surface of the activated carbon looks like a sponge under the microscope. The micropores trap and retain even the smallest impurities, for example harmful hydrocarbons from exhaust fumes and ozone. If all pores are clogged, the activated carbon layer has reached the end of its life and it's time to change the filter.

Standard Bosch cabin filters

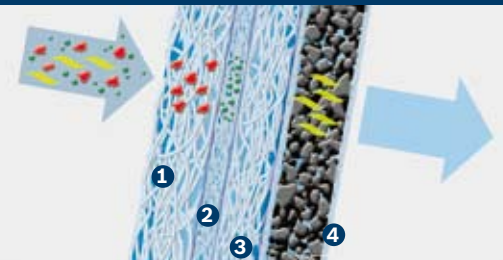


- ▶ Dust, pollen and dirt particles
- ▶ Particulates, diesel soot and bacteria

Structure of standard and activated carbon cabin filters:

- 1 Preliminary filter
- 2 Microfiber fleece
- 3 Filter
- 4 Activated carbon

Activated carbon cabin filter



- ▶ Dust, pollen and dirt particles
- ▶ Particulates, diesel soot and bacteria
- ▶ Harmful and odorous gases

Actively Exploit the Opportunity: Your Key to Customer Satisfaction

Activated carbon cabin filters are being thrust further into the limelight due to increasing health awareness and the growing sensitization of drivers to issues surrounding topics such as particulates and ozone. An increasing number of vehicles are already fitted with activated carbon cabin filters when they leave the factory. Take advantage of this great potential and tell your customers about the benefits of activated carbon technology.



Everything speaks in favor of the Bosch activated carbon cabin filter

- ▶ Identically constructed activated carbon cabin filters for **easy replacement** of many standard cabin filters
- ▶ Large filter surface and microfiber fleece ensure more effective filtration than with cheap filters
- ▶ Tried and tested installation instructions: every single step is carried out on the vehicle and documented
- ▶ Everything from a single source: reduced storage and order costs
- ▶ Competence across the entire filter sector: complete range of vehicle cabin, oil, air, fuel and DENOX filters

You do anything for satisfied customers. So do we.

- ▶ Ongoing updates and enhancements to the range
- ▶ Up-to-date product information and training
- ▶ Appealing marketing measures and active sales support
- ▶ Appealing marketing measures and active sales support
- ▶ Performance, safety and reliability through original equipment quality – this means a high level of customer satisfaction



Order no. 1 987 720 228



Order no. 1 987 720 023



It's as simply as that: Bosch cabin filters are replaced quickly and easily. The installation poster shows the most important steps for the most common vehicle models at a glance.

At a glance: Top sellers for top cars

Standard Part number	Short code	Activated carbon Part number	Short code	Brand	Model range/production period
1 987 432 001	M 2001	1 987 432 301	R 2301	Mercedes-Benz	C-Klasse 06.97-02.01 , CLK 09.96-01.03, E-Klasse 09.97-01.03
1 987 432 003	M 2003			Fiat	Bravo/Brava 10.95 - 09.01, Marea 10.98
				Alfa Romeo	156 (SW) 04.98 - 12.01
1 987 432 006	M 2006			Ford	Fiesta III/IV/IV 03.89 - 12.02, Ka 09.96 - 09.08
				Mazda	121 01.96 - 01.02
1 987 432 012	M 2012	1 987 432 312	R 2312	Audi	A3 09.96 - 07.01, TT 07.98 - 09.00
				Seat	Arosa 01.99 ->, Cordoba 05.99 - 12.02, Ibiza 05.99 - 12.02, Inca 11.95 - 04.04,
					Leon 02.02 - 04.04, Toledo 04.99 -05.02
				Skoda	Octavia 06.99 - 09.04, Superb 12.01 - 03.08
				VW	Caddy 11.95 -06.03, Golf III 11.91 - 12.97, Lupo 10.98 -07.05,
					Passat 10.00- 05.05, Polo 03.96 - 09.01
1 987 432 017	M 2017			Audi	80 01.92 - 05.95, A4 11.94 - 10.01 , Cabriolet 01.97 - 08.00, S4 10.97 - 09.01
1 987 432 020	M 2020			Mercedes-Benz	CL 09.99 - 08.06, S-Klasse 10.98 - 09.05
1 987 432 028	M 2028			Ford	Galaxy 02.95 -08.06
				Seat	Alhambra 05.98 ->
				VW	Sharan 07.96 - 02.00
1 987 432 030	M 2030			Opel	Vectra 09.95 - 09.02
1 987 432 036	M 2036	1 987 432 336	R 2336	BMW	3er 10.99 - 05.06, M3 04.01 - 08.06, X3 01.04 ->
1 987 432 038	M 2038			Opel	Astra 02.98 - 01.05 mit elektr. Zusatzheizung, Zafira 03.99 - 06.05
1 987 432 039	M 2039			Nissan	Kubistar 07.03 ->
				Renault	Clio II 03.99 - 10.07 , Kangoo I 09.98 - 12.07, Megane 01.96 - 09.03
1 987 432 040	M 2040			Opel	Astra 02.98 - 01.05 f. Fahrzeuge ohne elektr. Zusatzheizung
1 987 432 045	M 2045			Ford	Focus 08.98 - 05.05, Tourneo/Transit 05.02 ->
1 987 432 048	M 2048			Peugeot	206 06.98 - 02.09
1 987 432 056	M 2056			VW	California/Caravelle 09.90 - 06.03 , Multivan 09.90 - 06.03
1 987 432 057	M 2057	1 987 432 357	R 2357	Audi	A2 09.99 - 08.05
				Seat	Cordoba 09.99 - 09.05 , Ibiza 05.05 - 11.09, Leon 07.07 ->, Toledo 09.04 - 06.07
				Skoda	Fabia 09.99 ->, Roomster 01.07 ->
				VW	Fox 04.05 ->, Polo 05.04 ->
1 987 432 064	M 2064			Volvo	S60 11.00 ->, S80I 08.98 - 07.06, V70II 03.00 - 07.07, XC70I 08.02 - 07.07, XC90 01.03 ->
1 987 432 070	M 2070	1 987 432 370	R 2370	Mercedes-Benz	C-Klasse 01.01 - 02.08, CLK 09.02 ->
1 987 432 071	M 2071	1 987 432 371	R 2371	Audi	A4 07.01 - 06.08, A6 01.99 - 01.05, RS4/RS6 11.05 ->, S4 01.05 ->
				Seat	Exeo 12.08 ->
1 987 432 072	M 2072			Fiat	Doblo 07.00 - 11.09, Idea 01.04 ->, Punto 07.99 ->
				Lancia	Musa 10.04 ->, Ypsilon 06.03 ->
1 987 432 076	M 2076			Opel	Combo 10.01 - 08.04, Corsa 09.00 - 09.06, Signum 05.03 - 09.08,
					Tigra 06.04 ->, Vectra 09.01 - 10.08
				Saab	9-3 08.03 ->
1 987 432 079	M 2079	1 987 432 379	R 2379	Citroën	C2 09.03 ->, C3 09.03 ->, C4 09.03 ->, Picasso 09.03 ->, Pluriel 09.03 ->
				Peugeot	1007 04.05 ->, 307 08.00 - 05.08, 308 09.07 ->
1 987 432 081	M 2081			Mercedes-Benz	E-Klasse 09.03 - 08.09
1 987 432 083	M 2083			Citroën	Berlingo 07.96 ->, Xsara 09.00 ->
				Peugeot	Partner 09.02 - 04.08
1 987 432 093	M 2093			Renault	Megane II 10.03 ->
1 987 432 094	M 2094			Renault	Scenic II 05.03 - 04.09
1 987 432 097	M 2097	1 987 432 397	R 2097	Audi	A3 06.05 ->, S4 07.08 ->
				Seat	Altea 03.04 ->
				Skoda	Octavia 05.04 ->, Superb 03.08 ->, Yeti 05.09 ->
				VW	Caddy 02.04 - 05.08, EOS 05.06 ->, Golf V/VI 10.03 -> , Golf Plus 01.05 -> ,
					Jetta 09.05 ->, Passat 05.07 ->, Scirocco 08.08 ->, Tiguan 11.07 ->, Touran 02.06 ->
1 987 432 102	M 2102			BMW	5er 07.03 -> , 6er 09.04 -> , M5/M6 03.05 ->
1 987 432 113	M 2113			Ford	Focus II 07.04 - 01.08
				Volvo	C30 10.06 ->, C70 II 03.06 ->, S40 II 12.03 ->, V50 11.04 ->
1 987 432 114	M 2114			VW	California/Caravelle 04.03 - 11.09, Multivan 04.03 - 11.09
1 987 432 120	M 2120			Nissan	Micra 11.02 ->, Note 01.06 ->
				Renault	Clio III 06.05 ->, Modus 09.04 ->, Twingo II 04.07 ->
		1 987 432 300	R 2300	Audi	TT 09.00 - 06.06
				VW	Beetle 08.00 ->, New Beetle 05.99 - 02.07, Bora 05.99 - 02.07,
					Golf IV 10.97 - 04.08, Lupo 10.98 - 07.05
		1 987 432 337	R 2337	Mercedes-Benz	A-Klasse 10.97 - 08.04
		1 987 432 354	R 2354	Citroën	Xsara Picasso 01.00 ->
		1 987 432 361	R 2361	BMW	5er 04.00 - 07.03
		1 987 432 377	R 2377	Fiat	Bravo 03.07 ->, Stilo 10.01 ->
				Lancia	Delta 07.08 ->
		1 987 432 386	R 2386	Alfa Romeo	147 11.00 ->, 156 01.02 - 10.05, GT 10.03 ->
		1 987 432 387	R 2387	Ford	Fiesta VI 11.01 - 09.08, Fusion 10.02 ->
		1 987 432 410	R 2410	Mercedes-Benz	A-Klasse 09.04 ->, B-Klasse 04.05 ->
		1 987 432 422	R 2422	Audi	A6 07.04 - 10.08, S6 06.06 ->
		1 987 432 424	R 2424	BMW	1er 09.07 ->, 3er 09.06 ->

Be Proactive in Improving Comfort, Safety and Health

Bosch activated carbon cabin filters offer more comfort and increased safety for drivers and passengers.

- ▶ Health protection through reliable filtration of soot, pollen, dirt particles and pollutants
- ▶ Bosch activated carbon cabin filters also filter out harmful exhaust fumes and ozone
- ▶ Considerably fewer deposits, e.g. in the fan or on the front windscreen
- ▶ Extensive range of filters for almost every vehicle type

Workshop tip:

When servicing an air conditioning system, think about changing the cabin filter, because the service is only complete – and noticeable to your customers – with a new filter.

Bosch Diagnostics and parts: you only find both at Bosch



Perfectly synchronized:

The Bosch ACS 650 for a professional air conditioning service and fully automated maintenance and repair work on many common car air conditioners.

Robert Bosch GmbH
Automotive Aftermarket
Auf der Breit 4
76227 Karlsruhe

Where to find original Bosch quality:



BOSCH

Invented for life